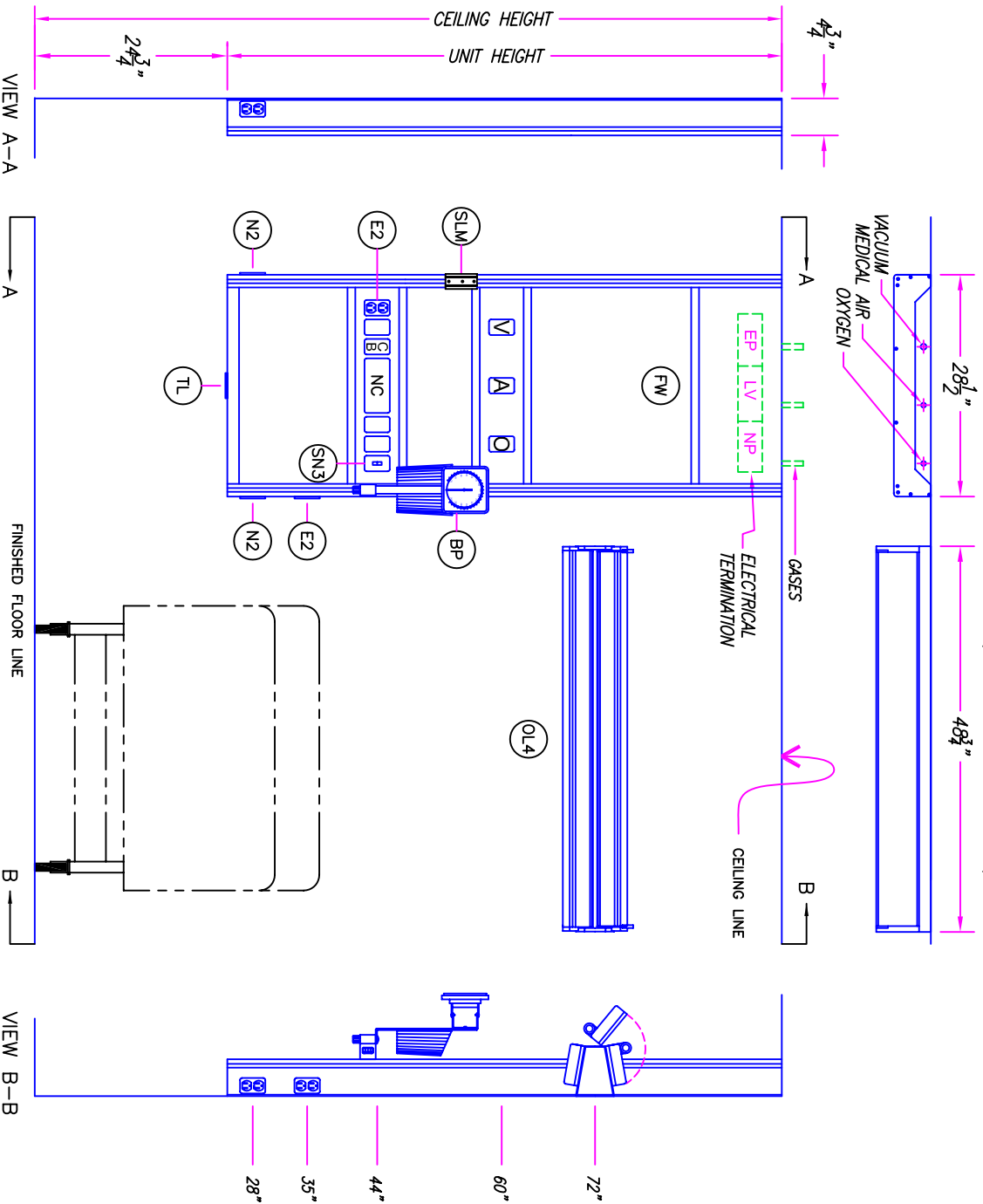


REGAL SERIES SURFACE MOUNTED 28" FLATWALL

THREE QUARTER LENGTH GENERAL CARE
(M/N: FW2807-GEN-P)

DRAWING # 19



TYPE:
QUANTITY:

SYSTEM DETAILS	
SYMBOL	DESCRIPTION
FW	FLATWALL, 28" WIDTH
N2	RECEPTACLE - DUPLEX IVORY
E2	RECEPTACLE - DUPLEX RED
NC	PROVISION - NURSE CALL
CB	PROVISION - CODE BLUE
TL	PROVISION - TELEPHONE
SN3	SWITCH, 3 POSITION L.V.
OL4	4' OVERBED LIGHT
LVC	LOW VOLTAGE CONTROLLER
BP	BLOOD PRESSURE DEVICE
SLM	VACUUM SLIDE, ON TRACK
O	GAS, OXYGEN
A	GAS, MED AIR
V	GAS, VACUUM

IMPORTANT: PLEASE VERIFY THAT THE ABOVE INFORMATION IS CORRECT, AND PROVIDE THE REMAINING DETAILS.

APPROVAL - PRINT AND SIGNATURE

DATE

PHONE NO.

AMICO Corporation
85 Fulton Way
Richmond Hill, Ontario
L4B 2N4, CANADA
Tel: (905) 764-0800
Toll-Free: 1-877-462-6428 (T)
Fax: (905) 764-0882
www.amico.com

HOSPITAL	A. NURSE CALL MFGR.:	MODEL NO.:
LOCATION	B. MEDICAL GAS MFGR.:	TYPE CONNECTION:
QTY: (A) TYPE UNITS AS SHOWN / (B) TYPE UNITS OPPOSITE	C. FINISH:	CEILING HEIGHT:
DRWG. NO. PRCEBOOK-19	DATE	PHONE NO.
DRAWN BY:CS	CHECKED BY:CS	REV. NO.:
DATE		