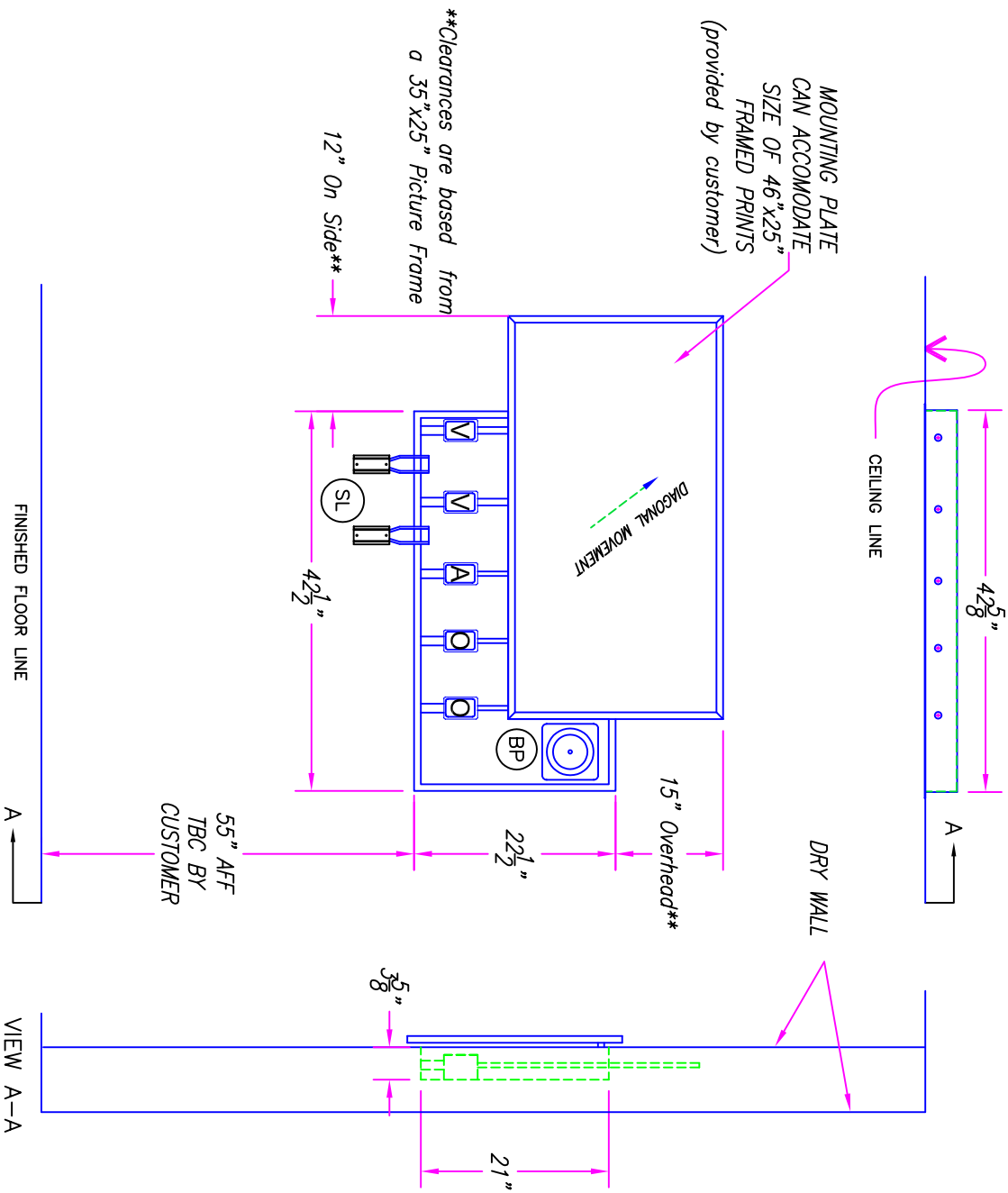


AMICO 5-GAS ARTWALL SYSTEM

(M/N: W-ARTWALL-5DL)

DRAWING # 06



TYPE:
QUANTITY:

SYSTEM DETAILS	
SYMBOL	DESCRIPTION
SL	VACUUM SLIDE, FLIP DOWN
BP	BLOOD PRESSURE DEVICE
O	GAS, SWIVEL TYPE, OXYGEN
A	GAS, SWIVEL TYPE, MED AIR
V	GAS, SWIVEL TYPE, VACUUM

- FEATURES:
- RECESSED ENCLOSURE (Gq#16 Painted steel)
 - SWIVEL TYPE GAS OUTLETS
 - FLOWMETERS, REGULATORS CAN BE ATTACHED TO THE SWIVEL OUTLETS.
 - UPWARD PICTURE FRAME (DIAGONAL LEFT OR RIGHT)
 - ACCEPTS FRAMED ARTWORK
 - GASES MANIFOLDED ON SITE BY DIV.15 CONTRACTOR

IMPORTANT: PLEASE VERIFY THAT THE ABOVE INFORMATION IS CORRECT, AND PROVIDE THE REMAINING DETAILS.

APPROVAL - PRINT AND SIGNATURE

DATE

PHONE NO.

55" AFF
TBC BY
CUSTOMER

AMICO Corporation
85 Fulton Way
Richmond Hill, Ontario
L4B 2N4, CANADA
Tel: (905) 764-0800
1-866-440-4888(F)
Fax: (905) 764-0882
www.amico.com

HOSPITAL	A. NURSE CALL MFRG: _____	MODEL NO.:	DRWG. NO.
LOCATION	B. MEDICAL GAS MFRG.: _____	TYPE CONNECTION:	DRAWN BY/CS
QTY: _____	C. FINISH: _____	CEILING HEIGHT: _____	CHECKED BY/CS
() TYPE _____ UNITS AS SHOWN / () TYPE _____ UNITS OPPOSITE			REV. NO.:
			DATE: